

# ghsla *UPDATE*

The Bulletin of the Georgia Health Sciences Library Association Vol. 23, No. 1  
Spring/Summer 2003

## *Greetings from the President*

We were all thrilled that so many of our members and friends were able to attend the GHSLA annual meeting in Savannah March 12-14. I hope you had as much fun being there as we did in putting it together! No doubt about it – planning a meeting is a group project! As 2003 Annual Meeting Program Chair, I would like to express my personal gratitude to all those members who helped make our meeting a success:

- Paula Christian, our outgoing President, worked incredibly hard soliciting donations from our vendor partners and organizing the Vendor Fair during our opening reception.
- Susan Poorbaugh, our Continuing Education chair, had to juggle arrangements for three different classes, and made sure all attendees were able to get MLA C.E. credits.
- The Program Committee was an invaluable help in putting it all together and staffing the registration table throughout the meeting:

Maxine Blair  
Jane Bridges  
Kathy Davies

Stephen Ellis  
Mary Fielder  
Donna Trainor

- Many of our members were part of the program, or introduced our speakers, or helped in innumerable other ways:

Jane Bridges  
Kathy Davies  
Mary Fielder  
Sandra Franklin  
Amy Harkness  
Miriam Hudgins  
Jan LaBeause  
Lee McCarley  
Pamela Queen

Ken Robichaux  
Peter Shipman  
Lisa Smith  
Rita Smith  
Linda Venis  
Vanessa Wallace-Lonon  
Mia Sohn White  
Cathy Woolbright

- Finally, cheers to the Georgia Interactive Network for Medical Information (GaIN) for sponsoring the MLA

*See Greetings, continued on page 11*

## **Inside this Issue**

Greetings from the President	1
Committees	2
Officers	3
GHSLA 2003	4
Minutes	6
Members	8

---

**ISSN: 0163-8355**



<http://www.ghsla.org>

---

**GHSLA UPDATE**, the newsletter of GHSLA, is published 3 times per year. A subscription is included in annual membership dues of \$15.00.

### **EDITOR:**

Miriam C. Hudgins  
Mercer University  
School of Medicine  
Medical Library & LRC  
1550 College Street  
Macon, GA 31207  
478-301-2318

[Update\\_editor@ghsla.org](mailto:Update_editor@ghsla.org)

---

# Officers

## President

Roxanne Nelson  
[President@ghsla.org](mailto:President@ghsla.org)  
Mercer University School of Medicine, Macon

## Vice President

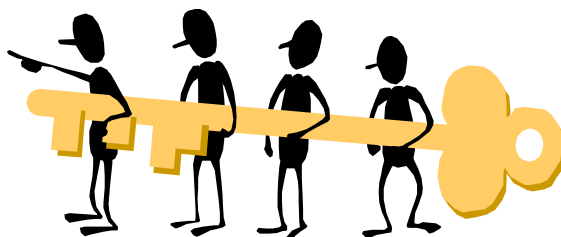
Lee McCarley  
[Programs@ghsla.org](mailto:Programs@ghsla.org)  
Mercer University School of Medicine, Macon

## Secretary

Peter Shipman  
[pshipman@mail.mcg.edu](mailto:pshipman@mail.mcg.edu)  
Medical College of Georgia

## Treasurer

Tara Douglas-Williams  
[tara.douglas-williams@tenethealth.com](mailto:tara.douglas-williams@tenethealth.com)  
Atlanta Medical Center



## Parliamentarian

Pamela Queen  
[pqueen@armc.org](mailto:pqueen@armc.org)  
Athens Regional Medical Center

## UPDATE Editor

Miriam Hudgins  
[Update\\_editor@ghsla.org](mailto:Update_editor@ghsla.org)  
Mercer University School of Medicine

## Webmaster

Marilyn Barry  
[webmaster@ghsla.org](mailto:webmaster@ghsla.org)  
DeKalb Medical Center, Decatur

---

# Committees



## Continuing Education

Jane Bridges (Chair)  
[BridJa1@memorialhealth.com](mailto:BridJa1@memorialhealth.com)  
Memorial Health University Medical Center

Karen Bonney  
[bonney\\_ka@mercer.edu](mailto:bonney_ka@mercer.edu)  
Mercer University School of Medicine

Susan T. Leik  
[leik\\_st@gain.mercer.edu](mailto:leik_st@gain.mercer.edu)  
Colquitt Regional Medical Center

Pamela D. Queen  
[pqueen@armc.org](mailto:pqueen@armc.org)  
Athens Regional Medical Center

## Consumer Health

Elizabeth Johnston (Chair)  
[consumer\\_health@ghsla.org](mailto:consumer_health@ghsla.org)  
Piedmont Hospital

Edie Lacy  
[lacy\\_edie@piedmont.promina.org](mailto:lacy_edie@piedmont.promina.org)  
Piedmont Hospital

Mary Fielder  
[fielder.m@gain.mercer.edu](mailto:fielder.m@gain.mercer.edu)  
Three Rivers AHEC

Tara Douglas-Williams  
[tara.douglas-williams@tenethealth.com](mailto:tara.douglas-williams@tenethealth.com)  
Atlanta Medical Center

Kathy Davies  
[Kd Davies@mail.mcg.edu](mailto:Kd Davies@mail.mcg.edu)  
Medical College of Georgia

Stephen Ellis  
[ellis\\_sb@mercer.edu](mailto:ellis_sb@mercer.edu)  
Mercer University School of Medicine

Mia Sohn White  
[msohn01@emory.edu](mailto:msohn01@emory.edu)  
Emory University

Lisa Smith  
[lsmith@gasou.edu](mailto:lsmith@gasou.edu)  
Magnolia Coastlands AHEC

---

## Membership

Amy Harkness (Chair)  
[membership@ghsla.org](mailto:membership@ghsla.org)  
Piedmont Hospital

Rosa Dickens  
[dickenr@msm.edu](mailto:dickenr@msm.edu)  
Morehouse School of Medicine

Joia Ellis-Dinkins  
[elldinj@msm.edu](mailto:elldinj@msm.edu)  
Morehouse School of Medicine

Kristin Howard  
[howard\\_ka@mercer.edu](mailto:howard_ka@mercer.edu)  
Mercer University School of Medicine

Margaret Truitt  
[mtruitt@mail.mcg.edu](mailto:mtruitt@mail.mcg.edu)  
Medical College of Georgia

## Miriam Libbey

Mia Sohn White (Chair)  
[msohn01@emory.edu](mailto:msohn01@emory.edu)  
Emory University

Susan Lee  
[susan.lee@choa.org](mailto:susan.lee@choa.org)  
Children's Healthcare of Atlanta at Egleston

Michael Shadix,  
[mdshadix@dol.state.ga.us](mailto:mdshadix@dol.state.ga.us)  
Roosevelt Warm Springs Institute for  
Rehabilitation

Lisa Westrick  
[lwestrick@mail.mcg.edu](mailto:lwestrick@mail.mcg.edu)  
Medical College of Georgia

## Nominating

Paula Christian (Chair)  
[pchristian@sjha.org](mailto:pchristian@sjha.org)

## Program

Lee McCarley (Chair)  
[Programs@ghsla.org](mailto:Programs@ghsla.org)  
Mercer University School of Medicine

Rosa Dickens  
[dickenr@msm.edu](mailto:dickenr@msm.edu)  
Morehouse School of Medicine

Joia Ellis-Dinkins  
[elldinj@msm.edu](mailto:elldinj@msm.edu)  
Morehouse School of Medicine

Mary Fielder  
[fielder.m@gain.mercer.edu](mailto:fielder.m@gain.mercer.edu)  
Three Rivers AHEC

Roxanne Nelson  
[President@ghsla.org](mailto:President@ghsla.org)  
Mercer University School of Medicine

Kate Rehkopf  
[kate.rehkopf@nghs.com](mailto:kate.rehkopf@nghs.com)  
Northeast Ga. Health System/Foothills AHEC

## Strategic Planning

Carolyn Brown (Chair)  
[librcb@emory.edu](mailto:librcb@emory.edu)  
Emory University School of Medicine

Sandra Franklin  
[librsf@emory.edu](mailto:librsf@emory.edu)  
Emory University

Cathy Woolbright  
[cathy.woolbright@crhs.net](mailto:cathy.woolbright@crhs.net)  
The Medical Center

Margaret Truitt  
[mtruitt@mail.mcg.edu](mailto:mtruitt@mail.mcg.edu)  
Medical College of Georgia

Rita Smith  
[smith\\_rb@mercer.edu](mailto:smith_rb@mercer.edu)  
Mercer University School of Medicine

## Web Site

Marilyn Barry (Chair)  
[webmaster@ghsla.org](mailto:webmaster@ghsla.org)  
DeKalb Medical Center

Amy Harkness  
[Amy.Harkness@piedmont.org](mailto:Amy.Harkness@piedmont.org)  
Piedmont Hospital

Lee McCarley  
[mccarley\\_lr@mercer.edu](mailto:mccarley_lr@mercer.edu)  
Mercer University School of Medicine

Cathy Woolbright  
[cathy.woolbright@crhs.net](mailto:cathy.woolbright@crhs.net)  
The Medical Center

---

# Minutes

## Annual Meeting Georgia Health Sciences Library Association

Thursday, March 13, 2003  
Savannah Marriott Riverfront  
Savannah, Georgia



President Paula Christian opened the business meeting at 8:38 a.m. welcoming everyone to Savannah. The minutes of the 2002 Annual Meeting were reviewed. Paula called for approval of the minutes. Arlen Gray moved to accept the minutes as written, and Tara Douglas-Williams seconded the motion. The membership approved the document by acclamation. Paula introduced the executive board members, and committee members.

### Officer and Committee Reports

#### Treasurer Report - Mia White

- The current checking account is private, so it will be closed in the next few months, as we have opened a new non-profit commercial account. Checks, deposit slips, and deposit stamp have been ordered and received for the new account.
- Our federal tax ID# was defunct, so a new one has been established; since we are non-profit and our funds do not exceed \$25,000, we do not have to file taxes.
- Our current balance is \$17,650 in the regular checking account, with \$205 in the non-profit account.
- Mia thanked the vendors, who donated \$2,000 to our meeting this year.
- Mia created a to-do list for the new Treasurer, and wished them luck.

**Miriam Libbey** - Mary Fielder mentioned the Miriam Libbey web page is up and we have received positive comments about it; there has been interest from librarians outside the state due to the web page.

#### UPDATE - Miriam Hudgins

- The last two issues of 2002 were combined; the Winter 2003 issue was recently mailed out.
- Issues are posted on the web site, with the table of contents available in the public part of the website. Members-only has the full-text.
- Miriam promises to get three issues out in this next year.

**Parliamentarian** - Pamela Queen verified that all GHSLA meetings are being conducted according to "Robert's Rules of Order Newly Revised."

**Webmaster** - Lee McCarley said the Miriam Libbey web section has been added to the website. Membership list will be updated on the web after this meeting.

#### Program - Roxanne Nelson

- Announced one change in today's program - the NLM Update will be at 10 a.m., and Jane Bridges' "Establishing a Professional Library in Nigeria" will be at 4 p.m.
- Introduced and thanked the committee members who have been working since last summer to pull this meeting together. She also thanked the GHSLA Executive Board for their suggestions and support. Roxanne singled out Paula Christian for the terrific job she did in putting together the vendor fair yesterday. Thanks also to the *Georgia Interactive Network for Medical Information (GaIN)*, for its sponsorship of the MLA HIPAA teleconference. There was a great turn out for this event.

- 
- Please remember to fill out the meeting evaluations before you leave Savannah. We rely on your input to make our meetings useful to you, our members.

#### **Consumer Health - Lisa Smith**

- Thanked the committee for all their help.
- The project from last year will be continued - we want to get the Resource Index to GHSLA Consumer Health up on our web page. Elsevier has given permission to reproduce the index, and so we will be creating an electronic form, re-verifying the web sites and then adding it to our website. An article was written about putting this project together, and will be published in the April issue of MLA bulletin.

#### **Membership - Amy Harkness**

- We currently have 72 members, with ten of them being new this year to GHSLA. Six of the new members are here with us in Savannah: Rosa Dickens and Joia Ellis-Dinkins - Morehouse School of Medicine; Kate Rehkopf - Northeast Georgia Health System/Foothills AHEC; Jim Tucker - EBSCO; Verma Walker and Lisa Westrick - Medical College of Georgia.
- Thanked Roxanne Nelson and Margaret Truitt, and the other Membership Committee members for their assistance and support so far this year.
- We hope to have some type of membership drive at the end of this year for the 2004 membership. If anyone is interested in joining the committee, contact Amy.
- Also, if any of your contact information should change through the year, let Amy know, and she will keep it updated in the database and the online directory.

**Continuing Education - Susan Poorbaugh** announced three CME classes would be offered tomorrow.

**Strategic Planning - Chair Carolyn Brown** was unable to attend the meeting; in her stead, Paula Christian announced the committee is planning work on the 5-10 year strategic plan and is looking for additional committee members. Contact Carolyn Brown to participate on this committee.

**Nominating - Cathy Woolbright** presented the slate of nominees for elected positions for 2003-04. She asked for any other nominations from the floor. No additional nominations were offered. Pat Herndon moved to accept the slate of officers as presented. Mary Fielder seconded. The membership approved the nominations by a voice vote. The Officers of GHSLA are: President: Roxanne Nelson; Parliamentarian: Pamela Queen; Vice President: Lee McCarley; UPDATE Editor: Miriam Hudgins; Secretary: Peter Shipman; Webmaster: Marilyn Barry; Treasurer: Tara Douglas-Williams.

#### **Other Business**

- Linda Garr Markwell: Benchmarking - start collecting data to input into network by end of April. A special interest group of MLA was created, and there will be a SIG meeting at MLA. Also setting up a list-serve for SIG.
- Sandra Franklin: A press conference is scheduled for Tuesday, March 18 th at 1 p.m. at Crawford Long Hospital to publicize the National Library of Medicine's pilot "Information Prescription Pads" program, a collaboration between the ACP-ASIM and the NLM.
- Jan LaBeause: Evaluation of state funded outreach programs is being studied by the four medical college library directors - Beverly Allen, Sandra Franklin, Tamera Lee and Jan LaBeause. Their work will be presented at a future 2004 GHSLA planning meeting. Thanked GHSLA for their letter of support.
- Paula Christian: Introduced and thanked the vendors for their support of the Annual Meeting. Roxanne Nelson presented Paula with a gift as a thank you for all her hard work as President.
- Lee McCarley: Announced the 2004 GHSLA Annual Meeting will convene at the Emerald Pointe Resort, Lake Lanier Islands.
- Paula Christian adjourned the meeting at 9:10 a.m.

Respectfully submitted by:

Amy Harkness,  
Membership Chair

# GHSLA 2003

March 12-14, Savannah, GA



## *Cultivating Excellence - Growing as Information Professionals*



Jan LaBeause, Pamela Queen, and Jenny McCarley chat at opening reception



Susan Leik and Cathy Woolbright smile for the camera



Members board trolley for tour of historic Savannah



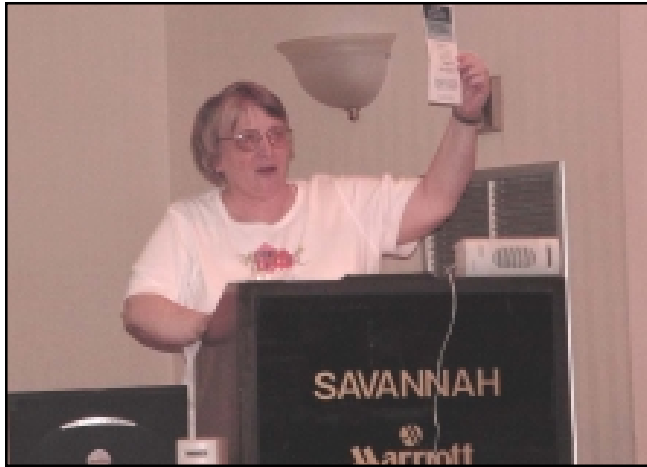
Rita Smith, Kristin Howard, Miriam Hudgins, Roxanne Nelson, and Sunitha Nair enjoy Low-Country Boil



Incoming president Roxanne Nelson presents report



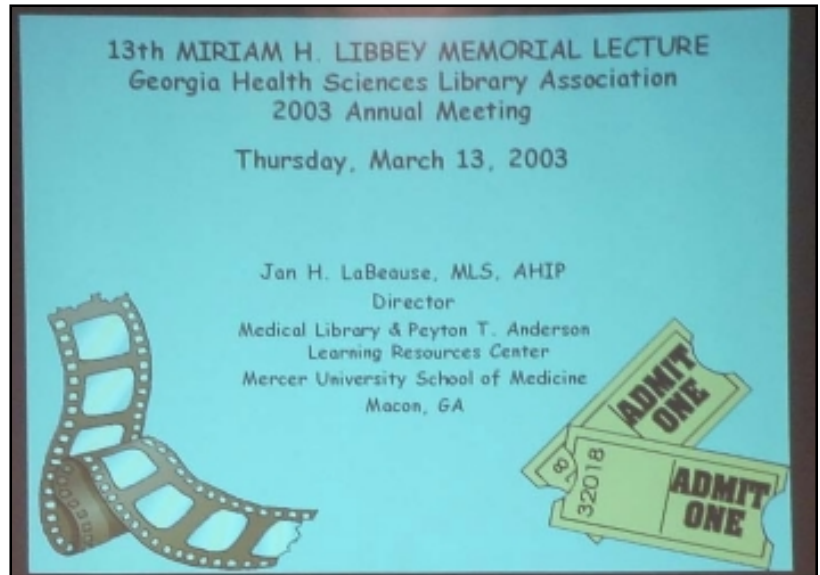
Librarians meet and eat at breakfast business session



Beth Wescott wants YOU for EFTS



L. Ray Patterson speaks to the group about copyright



Jan LaBeause entertains audience with Miriam Libbey lecture, "Shhh, Your Image is Showing: Hollywood Looks at Librarians"



Jane Bridges shares experiences in Nigeria



Ken Robichaux wins a prize at the Libbey lecture

---

# Members



**For complete contact  
information,  
see Member Directory at  
<http://www.ghsla.org/>  
(password required)**

In this time of online accessibility, the directory will now be published only in electronic format on the GHSLA website. It is available in .pdf format for easy downloading/printing. If you prefer a print copy to be mailed to you, please let Amy Harkness know through email ([membership@ghsla.org](mailto:membership@ghsla.org)) or telephone (404-605-2306.)

This electronic directory will enable us to keep it updated on a continual basis, rather than once a year as with the print version. If you have questions, problems, or concerns, please feel free to contact any of the Membership Committee: Amy Harkness, Margaret Truitt, Kristin Howard, Joia Ellis -Dinkins, or Rosa Dickens.

**Abbey, Eugenia**  
Honorary Member

**Abu-Zeid, Barbara**  
[babuzei@emory.edu](mailto:babuzei@emory.edu)  
Emory University

**Adams, Marianne**  
[madams@uh.org](mailto:madams@uh.org)  
University Hospital

**Allen, Beverly**  
[beverly@msm.edu](mailto:beverly@msm.edu)  
Morehouse School of Medicine

**Barry, Marilyn**  
[webmaster@ghsla.org](mailto:webmaster@ghsla.org)  
DeKalb Medical Center

**Bartlett, Opal**  
[Bebeball@aol.com](mailto:Bebeball@aol.com)  
Honorary Member

**Bell, Mamie**  
Centers for Disease Control & Prevention

**Benevich, Lauren**  
[lauren.benevich@solway.com](mailto:lauren.benevich@solway.com)  
Solvay Pharmaceuticals, Inc.

**Blair, Maxine**  
[blairm@sjchs.org](mailto:blairm@sjchs.org)  
St. Joseph's/Candler Health Systems

**Bonney, Karen**  
[bonney\\_ka@mercer.edu](mailto:bonney_ka@mercer.edu)  
Mercer University School of Medicine

**Bridges, Jane**  
[BridJa1@memorialhealth.com](mailto:BridJa1@memorialhealth.com)  
Memorial Health University Medical Center

**Brooks, Gary**  
Majors Scientific Books, Inc.

**Brown, Carolyn**  
[librcb@emory.edu](mailto:librcb@emory.edu)  
Emory University School of Medicine

**Burns, Carol**  
[libcb@emory.edu](mailto:libcb@emory.edu)  
Honorary Member



---

**Cann, Sharon**

[SharonCann@aol.com](mailto:SharonCann@aol.com)  
Honorary Member

**Chandler, Vivian**

[vivian.chandler@choa.org](mailto:vivian.chandler@choa.org)  
Children's Healthcare of Atlanta at Egleston

**Christian, Paula**

[pchristian@sjha.org](mailto:pchristian@sjha.org)  
Saint Joseph's Hospital of Atlanta, Inc.

**Davies, Kathy**

[Kdavies@mail.mcg.edu](mailto:Kdavies@mail.mcg.edu)  
Medical College of Georgia

**Dean, Carole**

[cx1@cdc.gov](mailto:cx1@cdc.gov)  
Centers for Disease Control and Prevention

**Dennison, Lyn**

[Ldenniso@mail.mcg.edu](mailto:Ldenniso@mail.mcg.edu)  
Medical College of Georgia

**Dickens, Rosa**

[dickenr@msm.edu](mailto:dickenr@msm.edu)  
Morehouse School of Medicine

**Douglas-Williams, Tara**

[tara.douglas-williams@tenethealth.com](mailto:tara.douglas-williams@tenethealth.com)  
Atlanta Medical Center

**Ellis, Stephen**

[ellis\\_sb@mercer.edu](mailto:ellis_sb@mercer.edu)  
Mercer University School of Medicine

**Ellis-Dinkins, Joia**

[elldinj@msm.edu](mailto:elldinj@msm.edu)  
Morehouse School of Medicine

**Evatt, Fay**

Honorary Member

**Fielder, Mary**

[fielder.m@gain.mercer.edu](mailto:fielder.m@gain.mercer.edu)  
Three Rivers AHEC

**Flowers, Jeanne**

[jflowers@hughston.com](mailto:jflowers@hughston.com)  
Hughston Sports Medicine Foundation

**Franklin, Sandra**

[librsf@emory.edu](mailto:librsf@emory.edu)  
Emory University

**Gray, Arlen**

[arlen.gray@choa.org](mailto:arlen.gray@choa.org)  
Children's Healthcare of Atlanta

**Griffin, Sheila**

[sheila.griffin@nghs.com](mailto:sheila.griffin@nghs.com)  
Foothills AHEC

**Harbin, Elaine**

[elaine.harbin@choa.org](mailto:elaine.harbin@choa.org)  
Children's Health Care of Atlanta@Scottish Rite

**Harkness, Amy**

[Amy.Harkness@piedmont.org](mailto:Amy.Harkness@piedmont.org)  
Piedmont Hospital

**Herndon, Pat**

[pat\\_herndon@shepherd.org](mailto:pat_herndon@shepherd.org)  
Shepherd Center

**Hobbs, Janet**

[hobbs.janet@mccg.org](mailto:hobbs.janet@mccg.org)  
Medical Center of Central Georgia

**Howard, Kristin**

[howard\\_ka@mercer.edu](mailto:howard_ka@mercer.edu)  
Mercer University School of Medicine

**Hudgins, Miriam**

[hudgins\\_mc@mercer.edu](mailto:hudgins_mc@mercer.edu)  
Mercer University School of Medicine

**Jackson, Elizabeth**

[jackson\\_e@mercer.edu](mailto:jackson_e@mercer.edu)  
Mercer University

**Johnston, Elizabeth**

[Elizabeth.Johnston@piedmont.org](mailto:Elizabeth.Johnston@piedmont.org)  
Piedmont Hospital

**Kavanaugh, Karalyn**

[karalyn@ebSCO.com](mailto:karalyn@ebSCO.com)  
EBSCO Information Services

---

**LaBeause, Jan**  
[labeause\\_j@mercer.edu](mailto:labeause_j@mercer.edu)  
Mercer University School of Medicine

**Lacy, Edie**  
[lacy\\_edie@piedmont.promina.org](mailto:lacy_edie@piedmont.promina.org)  
Piedmont Hospital

**Lee, Susan**  
[susan.lee@choa.org](mailto:susan.lee@choa.org)  
Children's Healthcare of Atlanta at Egleston

**Lee, Tamera**  
[tlee@mail.mcg.edu](mailto:tlee@mail.mcg.edu)  
Medical College of Georgia

**Leik, Susan**  
[leik\\_st@gain.mercer.edu](mailto:leik_st@gain.mercer.edu)  
Colquitt Regional Medical Center

**Leslie, Sharon**  
[leslie\\_sharon@piedmont.promina.org](mailto:leslie_sharon@piedmont.promina.org)  
Piedmont Hospital

**Lynch, Mary**  
[libmcl@emory.edu](mailto:libmcl@emory.edu)  
Emory University

**Manzay, Jewel**  
[jewel.manzay@rittenhouse.com](mailto:jewel.manzay@rittenhouse.com)  
Rittenhouse Book Distributors, Inc.

**Markwell, Linda**  
[liblgm@emory.edu](mailto:liblgm@emory.edu)  
Emory University, Grady Branch

**McCarley, Lee**  
[Programs@ghsla.org](mailto:Programs@ghsla.org)  
Mercer University School of Medicine

**McCullough, David**  
[dmccullough@argosyu.edu](mailto:dmccullough@argosyu.edu)  
Argosy University/Atlanta

**Nair, Sunitha**  
[nair\\_sa@mercer.edu](mailto:nair_sa@mercer.edu)  
Mercer University School of Medicine

**Nelson, Roxanne**  
[President@ghsla.org](mailto:President@ghsla.org)  
Mercer University School of Medicine

**Parthasarathy, Kalyani**  
[kpartha@emory.edu](mailto:kpartha@emory.edu)  
Emory University

**Perry, Nena**  
Honorary Member

**Poorbaugh, Susan**  
[spoorbau@mail.mcg.edu](mailto:spoorbau@mail.mcg.edu)  
Medical College of Georgia

**Queen, Pamela**  
[pqueen@armc.org](mailto:pqueen@armc.org)  
Athens Regional Medical Center

**Rehkopf, Kate**  
[kate.rehkopf@nghs.com](mailto:kate.rehkopf@nghs.com)  
Northeast Ga. Health System/Foothills AHEC

**Rosner, Anna-Liisa**  
[rosner\\_al@mercer.edu](mailto:rosner_al@mercer.edu)  
Mercer University School of Medicine

**Ruelle, Barbara**  
[libbar@emory.edu](mailto:libbar@emory.edu)  
Emory University

**Satterthwaite, Rebecca**  
[bus8@cdc.gov](mailto:bus8@cdc.gov)  
Centers for Disease Control & Prevention

**Shadix, Michael**  
[mdshadix@dol.state.ga.us](mailto:mdshadix@dol.state.ga.us)  
Roosevelt Warm Springs Institute for Rehabilitation

**Shipman, Peter**  
[pshipman@mail.mcg.edu](mailto:pshipman@mail.mcg.edu)  
Medical College of Georgia

**Smith, Lisa**  
[lsmith@gasou.edu](mailto:lsmith@gasou.edu)  
Magnolia Coastlands AHEC

---

**Smith, Rita**  
[smith\\_rb@mercer.edu](mailto:smith_rb@mercer.edu)  
Mercer University School of Medicine

**Torrente, Kathy**  
[libkjt@emory.edu](mailto:libkjt@emory.edu)  
Emory University

**Trainor, Donna**  
[dtrainormls@aol.com](mailto:dtrainormls@aol.com)  
Honorary Member

**Truitt, Margaret**  
[mtruitt@mail.mcg.edu](mailto:mtruitt@mail.mcg.edu)  
Medical College of Georgia

**Tucker, Jim**  
[jtucker@ebSCO.com](mailto:jtucker@ebSCO.com)  
EBSCO Information Services

**Venis, Linda**  
[linda.venis@wellstar.org](mailto:linda.venis@wellstar.org)  
Kennestone Hospital

**Walker, Verma**  
[vwalker@mail.mcg.edu](mailto:vwalker@mail.mcg.edu)  
Medical College of Georgia

**Wallace-Lonon, Vanessa**  
[WallaVa1@memorialhealth.com](mailto:WallaVa1@memorialhealth.com)  
Memorial Health University Medical Center

**Westrick, Lisa**  
[lwestrick@mail.mcg.edu](mailto:lwestrick@mail.mcg.edu)  
Medical College of Georgia

**White, Mia**  
[msohn01@emory.edu](mailto:msohn01@emory.edu)  
Emory University

**Williams, Shirley**  
[swilliams@uh.org](mailto:swilliams@uh.org)  
University Hospital

**Woolbright, Cathy**  
[cathy.woolbright@crhs.net](mailto:cathy.woolbright@crhs.net)  
The Medical Center

---

*Greetings, from page 1*

Teleconference "Get Hip to HIPAA," offered in conjunction with our meeting.

Speaking of annual meetings, mark your calendars now for our 2004 meeting, to be held March 11-13, 2004 at the Emerald Pointe Resort on Lake Lanier. Learn more about the hotel and resort by visiting their website: <http://www.lakelanierislands.com/accommodations/emerald.asp>. We were pleased to be able to schedule the meeting into the weekend this year, so that attendees won't have to miss a day of work if they want to attend a C.E. class. Lee McCarley, Program Chair, has assembled his committee, so look for more details soon.

There's another meeting involving our group coming up this summer. GHSLA was very pleased to be asked to participate in the program for this year's GOLD/GALILEO Users Group annual conference, to be held August 1, 2003 at the Georgia Center for Continuing Education in Athens. Registration details are sketchy as we go to press, but our new

Consumer Health Committee chair Elizabeth Johnston has assembled a group of librarians from our membership to speak on the topic "Consumer Health@Your Library." This is a wonderful way for GHSLA to reach out to other librarians from all over the state. Thanks to Pat Herndon and Lisa Smith for getting our organization involved in this project!

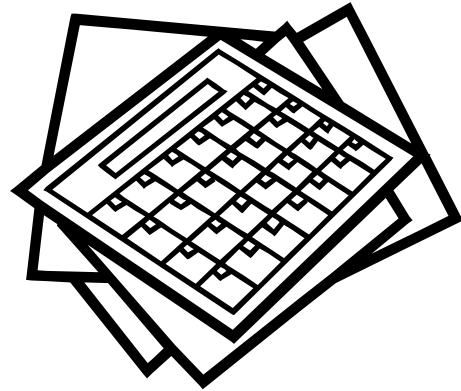
Finally, and on behalf of the GHSLA Executive Board, I would like to remind all of our members that this is YOUR organization. We would love to have you to volunteer to serve on a committee or stand for election. Please keep us posted on your activities, thoughts about programs or C.E. classes, or anything else that interests you. We are always looking for fresh ideas, and we're open to suggestions!

You can contact me at [President@ghsla.org](mailto:President@ghsla.org) or Lee McCarley, 2004 Program Chair at [Programs@ghsla.org](mailto:Programs@ghsla.org)

Have a wonderful summer!

*Roxanne*

**Mark your calendar for:**  
**GHSLA 2004**  
**March 11-13**



Emerald Pointe Resort on Lake Lanier. For more information, see  
<http://www.lakelanierislands.com/accommodations/emerald.asp>



*Medical Library and Learning Resources Center  
Mercer University School of Medicine  
1550 College Street  
Macon, Georgia 31207-0001*